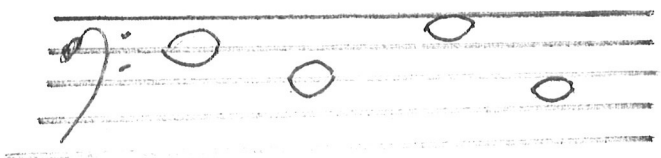


# Pracovní list .....1.ročník

Procvičování not v basovém klíči:  *F klíč* *nota f*





*doplň názvy not*





? Doplň noty nebo pomlky tak, aby každý řádek i sloupec odpovídal zadanému taktu




**4/4 takt**

|  |   |   |
|--|---|---|
|  |   |   |
|  |  |   |
|  |   |  |

**2/4 takt**

|   |   |   |
|---|---|---|
|  |   |  |
|   |  |   |
|   |   |  |

**3/4 takt**

|   |  |  |
|---|--|--|
|  |  |  |
|   |  |  |
|   |  |  |

Youtube: Příhody lišky Bystroušky 1.část ( Leoš Janáček)